



Fixture Type  
Materials  
Finish

Interior linear LED strip  
Aluminium  
Silver  
\*consult factory for other finishes

Lamp Type  
Lamp Quantity  
Lamp Included  
Wattage  
Input Voltage  
Delivered Lumens  
Kelvin  
CRI  
Power S Type  
Power S Quantity  
Power S Location  
Dimming Type

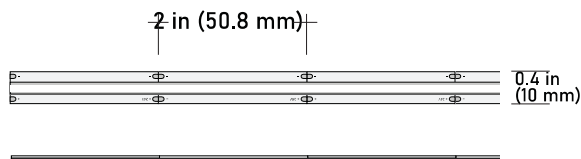
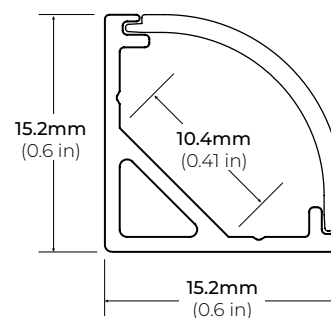
LED  
n/a  
Yes  
3.2 W/ft  
24 VDC  
250 lm/ft  
2700 K  
95  
Driver  
Up to 25 ft  
Remote  
ELV

Designer

Core

Listings

UL  
JA8 Listed  
DRY





FEATURES

- Customizable
- Durable, anodized aluminum
- Protects LED systems from dust and other elements
- Slim, low profile design
- Dissipates heat from LED, prolonging its lifetime

SPECIFICATIONS

TYPE	Surface/ Corner Mount
AVAILABLE LENGTHS	48 in./ 84 in./ 98.5 in.
FINISH	White/ Black/ Silver
LENS OPTION	Frosted
CHANNEL	ALP50C-V2
LENS	ALP50C-LN (Frosted)
END CAP	ALP50C-V2-EC (Included)
MOUNTING CLIPS	ALP50C-CL (Included)
WARRANTY	5 Years



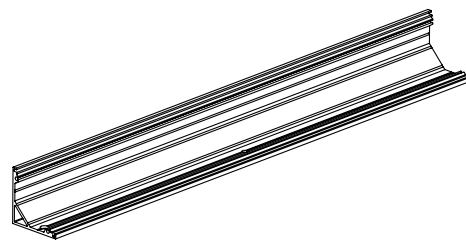
MODEL	LENGTH	LENS	FINISH
ALP50C-V2	<b>49</b> 49 in.	<b>FR</b> Frosted Lens	<b>WH</b> White
	<b>84</b> 84 in.		<b>BK</b> Black
	<b>98</b> 98.5 in.		<b>SI</b> Silver
			<b>CU</b> Custom (Powder Coat)



## COMPATIBLE ACCESSORIES

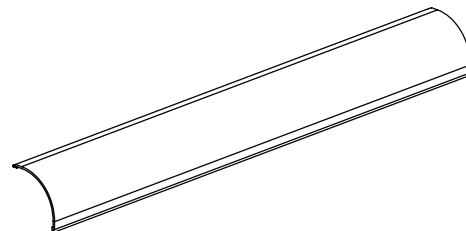
---

### ALP50C-V2 ALUMINUM CHANNEL



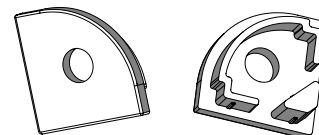
### ALP50C-LN PLASTIC LENS

\*INCLUDED WITH EVERY PROFILE



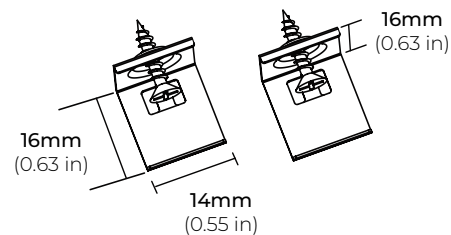
### ALP50C-V2-EC END CAP

\*INCLUDED WITH EVERY PROFILE



### ALP50C-CL METAL MOUNTING CLIPS

\*INCLUDED WITH EVERY PROFILE



SPECIFICATIONS

INPUT VOLTAGE	24V DC
POWER CONSUMPTION	3.2 per foot
LUMEN OUTPUT	(27K) 272 Lm/Ft. (30K) 292 Lm/Ft. (40K) 297 Lm/Ft.
BEAM ANGLE	180°
CRI	90+
DIMMING	MLV, ELV, 0-10 and TRIAC
MAXIMUM RUN LENGTH	16.4 Feet
FIELD CUTTABLE	Every 2 in
IP RATING	IP54 dry location (indoor)
LUMEN MAINTENANCE	50,000 hrs.
OPERATING TEMPERATURE	-40°F(-40°C)~+140°F(+60°C)
BINNING	2 Step Macadam Elipse
CERTIFICATIONS	UL listed, TITLE 24 JA8
DIMENSIONS	0.4" x 0.08 (width x height)
WARRANTY	5 Years

Delivering a solid stream of linear light, the LSM32CB features the latest in COB technology for total linear diffusion in a low profile package. Fits profiles up to 0.4" (10mm) wide.

FEATURES

- 3.2W per Foot
- 90+ CRI
- California TITLE 24 JA8 compliant
- Field cuttable
- Suitable for accent or ambient lighting
- 27K, 30K and 40K CCT options available
- Available in 24V
- UL Listed
- Dimmable with CORE Lighting dimmable drivers



	COLOR TEMP	CRI	LUMEN/FT
	2700K	90	272
	3000K	90	292
	4000K	90	297

STANDARD ORDERING CODE

Model	Color Temp	Length	Voltage	Profile
LSM-32CB	27K 2700K	16 16.4 Ft.	24 24 Volts	<sup>2</sup> See p3 for options
	30K 3000K	100 100 Ft.		
	40K 4000K	<sup>1</sup> XX per Ft.		





**PSDL SERIES** indoor/outdoor drivers are highly efficient, stable with smooth dimming capability compatible with most TRIAC, ELV, MLV, reverse and forward phase dimmers, and on/off switches. These drivers are derated allowing them to be loaded to maximum wattage capacity.

### FEATURES

- High power factor/efficiency
- Short circuit and over current protection
- 100~277V AC for any residential or commercial application
- Superior PWM dimming technology
- Factory derated
- Only 10% minimum load
- Compatible with TRIAC, MLV and ELV dimmers
- Flicker-free dimming

### INPUT

INPUT VOLTAGE RANGE	100~277V AC
INPUT FREQUENCY RANGE	47~63 Hz
POWER FACTOR (AVG.)	≥0.99 (120VAC) ; ≥0.94 (277VAC)
AC CURRENT (MAX.)	1.8A (100V AC)
INRUSH CURRENT	15A, 50%, 1.4ms
LEAKAGE CURRENT	<0.5mA

### OUTPUT

OUTPUT VOLTAGE	24V DC
OUTPUT CURRENT @ MAX LOAD	6.25A
OUTPUT MAX WATTAGE	150W
MINIMUM LOAD	10%
MAXIMUM LOAD	100%

### ADDITIONAL SPECIFICATIONS

ENVIRONMENT	Outdoor Rated IP65
DIMMING	ELV, MLV & TRIAC
SHORT CIRCUIT	Short Circuit auto recovery
WIRE TERMINAL CONNECTION	Fits up to 12AWG
HOUSING / COOLING	Free-air convection

### SPECIFICATIONS

CLASS 2	NO
LOAD REGULATION	2%
LINE REGULATION	5%
INPUT FREQUENCY	47~63 Hz
POWER FACTOR	>0.92
EFFICIENCY	>83%
MTBF	50,000 hrs.
OPERATING ENVIRONMENT	-40°F ~ 140°F (-40°C ~ 60°C)
FUNCTION SURFACE TEMP	-40 to +80 (25 C AMB)
STORAGE TEMPERATURE	-40°F ~ 176°F (-40°C ~ 80°C)
HUMIDITY	20~90% RH, non condensing
LENGTH	10.25" (260.3MM)
WIDTH	4.06" (103.2MM)
HEIGHT	1.82" (41.1MM)

### MISC

SAFETY STANDARDS	UL-8750, UL 1310
WITHSTAND VOLTAGE	I/P-O/P : 1.88KV AC
EMC EMISSION	FCC Part 15 B
WARRANTY	5 year Limited

